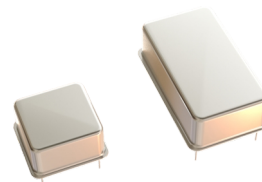


Voltage Controlled Crystal Oscillator Full/Half Size(VCXO)

Feature

- Size 20.3x12.6mm and 12.6x12.6mm
- Hybrid IC Circuit Construction
- CMOS compatible output
- All metal, hermetically sealed welded package



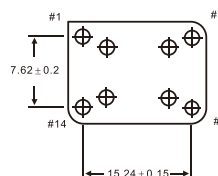
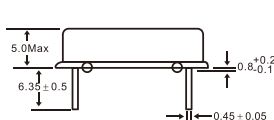
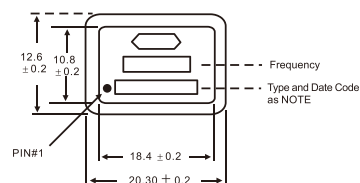
Electrical Specifications

Item		Specifications	
Frequency Range		1MHz~80MHz	
Frequency Stability		±25, ±50, ±100ppm	
Operating Temperature		0-70°C, -20-70°C, -40-85°C	
Fan Out Type		HCMOS Square wave	
Load		15pF	15pF
	Voltage Voh	4.5V Minimum	3.0V Minimum
	Voltage Vol	0.4V Maximum	0.3V Maximum
	Current Ioh	-0.8 mA	4.0 mA
	Current Iol	8.0 mA	4.0 mA
	Duty Cycle	40/60 Maximum	40/60 Maximum
	Rise/Fall Time	5ns	5ns
Frequency Control	Positive Transfer Characteristic		
	Pullability	±50ppm, ±100ppm, ±150ppm, ±200ppm Minimum	
	Control Voltage	0.5Vdc to 4.5Vdc	0.3Vdc to 3.0Vdc
	Center Frequency	2.5 Vdc	1.65 Vdc
	Monotonic Linearity	< ± 15%	
	Input impedance	50 Kohms Normal	
Supply Voltage		+5Vdc +/-5% or 3.3V +/-5%	+3.3V
Supply Current		60mA Max	40mA Max
Package		All metal, hermetically sealed welt package	

*Please consult our sales representative for other specifications.

Dimension(mm)

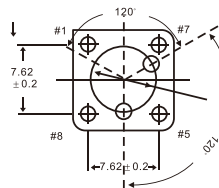
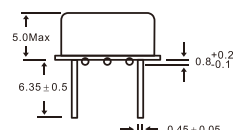
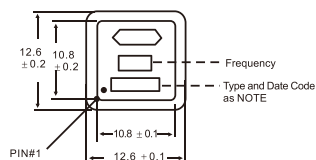
Full Size VCXO



FULL SIZE	
PIN	Connection
#1	Control Voltage
#7	GND
#8	Out put
#4	(+)5VDC

All units are in mm

Haif Size VCXO



HALF SIZE	
PIN	Connection
#1	Control Voltage
#4	GND
#5	Out put
#8	(+)5VDC

All units are in mm