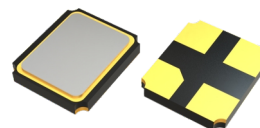


## SMD Seam Sealed Crystals 1.2×1.0×0.33 mm

### Feature

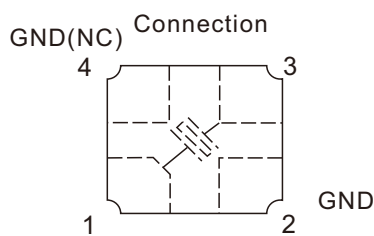
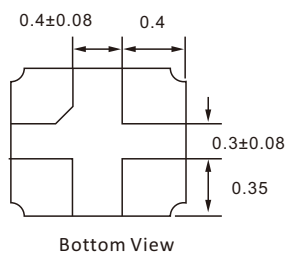
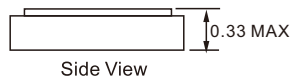
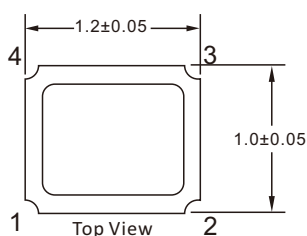
- Size 1.2 × 1.0, ultra miniature and lightweight SMD crystal with a low profile of 0.33mm
- Seam with vacuum Sealed for Ultra-small size
- High precision and high reliability
- Automatic mounting is possible
- Reflow is possible
- RoHS Compliant / Pb Free



### Electrical Specifications

Item	Specifications	
Frequency Range(MHz)	32~40	40~96
Mode	AT/Fundamental	
Load Capacitance (CL)	8pF, 10pF, 12pF or Specify	
Frequency Tolerance( at 25°C )	±10ppm~±30ppm or specify	
Operating Temperature Range	-20~+70°C or Specify	
Frequency Stability Over Operating Temperature Range	±10ppm ~ ±30ppm or specify	
Equivalent Series Resistance (ESR) max.	150Ω	100Ω
Storage Temperature Range	-55~+125°C	
Shunt Capacitance( C <sub>0</sub> )	3pF Max	
Drive Level (Typical)	50μW max	
Aging @25°C 1st Year (Max)	±2 ppm, ±5ppm	

### Dimension(mm)



# 4pin connect to GND. NC is Open

